

American Society of Clinical Laboratory Sciences

NewsScope

Summer Edition



2010 ASCLS-IA/ASCP/CLMA Spring Meeting



Howdy Pardners! It's been a while since ya'll were here in Altoona, Iowa for your annual Spring Meetin'. The way I hear tell, ya'll had a great time! I am still hearing stories around the stables! Don't worry, I won't repeat what I heard! I did hear all the applause ya'll gave your opening keynote speaker, David Glenn, CEO of Pathology Services, PC, in North Platte, Nebraska. He was tellin' ya how to use laughter to manage stress. I can relate to that!! I feel a whole lot of stress when the glue wagon roles by! Mr. Glenn was sayin' how developin' a shared management improves productivity, helps staff retention, and raises morale. Now that is sweet! I also heard about the classes ya'll got to choose from. You better never have a problem in blood bank cause they taught ya all ya need to know to fix things up right! And don't be burying no varmint in my straw cause with the forensic test ya learned about, ya never will get away with it! And I have got to be full of Vitamin D cuz I am outside all day long! I only need 10 minutes of that sunshine to keep me healthy!



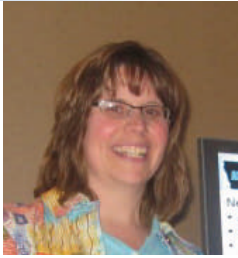
Ya'll had a good time eating and workin' your jaw talkin' to people? There were a lot of ASCLS people getting awards and recognition for different things. Member of the Year, Student of the Year, and on and on! That is great! It's nice to be recognized. Ya'll played games and had pizza, too. Lots and lots of hard questions that I sure didn't know the answers to! Glad ya'll had the book-learnin'. Did any of ya'll hit the casino? Bet that was fun! I'm not much for slot machines and cards. Helps to have opposable thumbs! I'm more into horse bettin'! I was watchin' all sorts of people bringin' in machines to look at. It's nice that the vendors come to meetings and chat with ya'll and let ya poke around on their wares. Ya'll had annual business meetin's too, didn't ya. Gotta get the business part of it taken care of so ya can get things done durin' the rest of the year. New officers and president's and stuff. Kinda fun, huh? It all came to an end pretty fast now didn't it? Good times usually do. Your big time president, that nice lady Mary Ann McLane sure said some nice things. She did some exploring on how the word "professionals" apply to lab people. She encourages ya'll to

"Go forth and provide the face." You can do it!! Set a good example for the laboratory and people will talk about how great ya'll are! Well, Pardners, it's been nice. Glad ya'll came to visit. Ya'll come back now, ya hear!!



Inside this issue:

Presidents Column	2
Leadership Academy	3
What is your learning Style?	4
IPDH Update	5
Awards and Recognition	6
Officer Directory	7



FROM THE PRESIDENT



We have something to celebrate ~ 63 MLS/MLT students! At this year's ASCLS-IA/ASCP/CLMA Spring Meeting, we had 63 students attending. This is an all time high. Thanks to everyone who encouraged students to attend. Most of all, I applaud those 63 students who chose to explore their profession and network with their colleagues. To honor these students, I would like to share the lab lessons I have learned along the way. ASCLS-IA has played a key role in each and every one of these lessons.

- A* ~ Advocate for your profession. Upon graduation, when people asked what I would do, I would say "I just work in the lab" because most did not really know what an MT or MLT did. I started getting frustrated, more with myself than others. I started educating my relatives and the staff I had contact with about our professional role in health care. Now I talk about laboratory issues with Girl Scouts, students of all ages, customers, government officials, health professionals, and other laboratory personnel. If we do not advocate for ourselves, no one else will do it.
- S* ~ Serve as a partner with other health care professionals to provide the best patient care possible. As much as we would like to stay isolated in the safety of the lab, we are part of an integrated community. We are part of the health care team and need to understand the responsibilities of all members. There is so much information available, we can serve as a resource not just for health care professionals, but customers as well. It is easy to say "I don't know" or "ask your provider" but how empowering to do the research, involve the providers, and say "here is what I found out".
- C* ~ Challenge yourself. There are times when it is all you can do to take a deep breath and do what needs to be done. For all of you with years under your belt, remember the first time you drew blood on a child? Or the first arterial blood gas you collected? Or the first blood bank trauma when blood was needed truly STAT? Or the first differential when a patient was diagnosed with cancer? For new recruits to the profession or to a new position, this is where the adrenaline rush is, where all your training and knowledge comes together. You can do it, just take it one breath at a time!
- L* ~ Learn and keep learning. It is the only way to approach our career. Our profession continues to evolve. Tests are constantly being created as well as new methods. We need to keep abreast of all those changes so we can provide quality care. My brother asked me how the explosion of point of care testing would impact our profession. I feel there will still be tests that need to be interpreted. There will still be health professionals needing assistance in determining the best screening or diagnostic tests. There will still be customers or their family members with questions about their lab tests or results. There is a vacuum out there and we need to be poised to fill this gap.
- S* ~ Strive to connect with fellow laboratory professionals. We have all been through the same struggles and issues. It helps to have others in your back pocket as a resource or support. As a new manager in a network, I was fortunate to have other managers for support and suggestions AND a great crew to work alongside. The transition would not have gone as smoothly without all of their guidance and support. Go to the ASCLS-IA website and join the blog. Add ASCLS-IA and ASCLS to your Facebook page. Join a group on the ASCLS website. Go to an ASCLS-IA board meeting. Email one of us in the NewsScope ...don't think about it....just do it! By networking with each other, we can serve ourselves and our profession.

continued on page 3

continued from Page 2

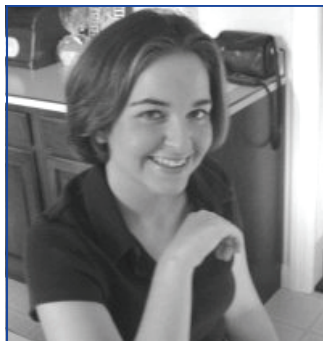
I ~ Instincts; follow yours. Over and over, I have learned to follow my instincts. If something feels funny or makes you pause, look at it closer. Otherwise, it will take a lot more time to redo it. This has served me well with specimens and paperwork. I cannot tell you how many mislabeled specimens this has led me to catch in my career. An example would be the case of an infant CBC where the platelet count was on the low side of normal and the instrument did not flag clumps. However, I am still learning this one. This past week, I rushed through urine drug screen paperwork. I kept telling myself to stop, slow down, and concentrate but I refused to listen. It took me 3 times because rather than slowing down and doing it right the first time, I kept plowing through it.

A ~ Always recognize your role in improving the quality of people’s health. You may not always see it or feel it or be recognized for it, but every day, stop and think of the impact you have on someone’s life!

President Keri Erickson

www.ascls-ia.org

IOWA SENDS ANOTHER MEMBER TO LEADERSHIP ACADEMY



The last few years have been “berry, berry, good”.....to Iowa! We will be sending another member from ASCLS-IA to ASCLS Leadership Academy. The ASCLS Leadership Academy is designed to prepare ASCLS members for current and future leadership roles in the organization by providing a structured program of critical leadership topics. Meighan Sharp received word right before the spring meeting that she had been chosen for this next leadership class.

She will follow in the footsteps of 3 other members, Kim Von Ahsen, Theresa Ortner, and K. Lindsey Davenport-Landry. Meighan graduated with a B.S. degree in Microbiology from Michigan State University in 2004. From there she did her Med. Tech. internship at the Hurley School of Medical Technology in 2005 and earning her ASCP certification shortly after completion of the program. For 3 years, Meighan worked chemistry and blood bank at Sparrow Hospital in Lansing, Michigan. Since the spring of 2008, Meighan has been the phlebotomy supervisor for Iowa Methodist Medical Center in Des Moines, Iowa. Meighan has been a member of ASCLS (Michigan and Iowa) since 2007. She is currently ASCLS-IA’s Leadership Committee Chair.

UPCOMING EVENTS:

- ASCLS ANNUAL MEETINGJULY 27-31ST, ANAHEIM, CALIFORNIA
- SUMMER BOARD MEETINGAUGUST 7, DMACC CAMPUS-ANKENY
- FALL BOARD MEETING.....NOVEMBER 20, LOCATION-TBA

What Is Your Learning Style?

By

Brenda Barnes, MEd, MT (ASCP) BB
Director, Medical Laboratory Science Program and Asst. Professor
Allen College, Waterloo, Iowa

Anyone familiar with the work of Howard Gardner has heard the term “multiple intelligences”, but what exactly does this term mean? According to Gardner (1983), an intelligence is the ability to solve a problem or create a product valued within a cultural setting. He later refined this definition to include the processing of information. Seven intelligences have been proposed which include linguistic, musical, logical-mathematical, spatial, bodily-kinesthetic, intrapersonal, and interpersonal intelligences (Gardner, 1983). Verbal learners prefer using words, both in speech and in writing to process information. Music and sounds help many people learn new information. Have you ever created a silly song or even a rap or a rhyme to remember something? Logical learners use reasoning and systems. Visual (spatial) learners prefer using pictures or images to help understand something. A sense of touch or using the body helps many people process new information. Those who have a strong interpersonal intelligence prefer learning in groups or with other people, while those with a high intrapersonal intelligence prefer to work alone.

So which intelligence applies to you? It’s important to remember that no one intelligence defines a person. A learner or worker may process information in a variety of ways. For example, I learn best through verbal, logical, and intrapersonal means. In other words, I like to write things down or talk my way through whatever I’m working on. I also like to group things into meaningful systems. My students know that the best way to get on my good side is to put information in a table or spreadsheet! While I can work with others to accomplish a task, I prefer to work on my own when processing information or completing a project. Combine that with my verbal learning style and you are probably envisioning me talking to myself a lot...which I do!

It’s also important to mention that linguistic and logical-mathematical intelligences have been highly valued in educational settings, putting those students that learn best through other means at a disadvantage. If you’ve never considered yourself a good test taker, it doesn’t necessarily mean you aren’t smart. It may simply mean that linguistic and logical methods of processing information are not your preferred style. So, if you’re studying or trying to learn a new procedure at work and having trouble understanding what you’re doing, try looking at it another way. Make up a silly song or a poem. Try drawing a picture to represent what you’re doing. Use some modeling clay or pipe cleaners to model the information (this uses both the spatial and the kinesthetic intelligences!) Try talking through the process with a co-worker or classmate. Or, try talking out loud to yourself (you know I do this!) In other words, if you’re having trouble understanding something, change up what you’re doing. You just might accomplish your task...or come up with a really cool laboratory rap!

Reference:

Gardner, H. (1983). *Frames of mind: The theory of multiple intelligences*. New York, NY: BasicBooks.

FIRST YEAR PROFESSIONAL LENDS A HAND TO RECRUITMENT!

You would usually see our 2009-2010 First Year Professional Rachel Leemkuil at all the board meetings, committee events, and of course the annual Spring Meeting. This year held a different scenario as she found herself busy delivering her firstborn while we were enjoying our opening keynote speaker. Little Miss Ella came into the world healthy and happy and as her mother reports, will be going into the laboratory field as soon as she can reach the microscope!! A round of applause to Rachel for going above and beyond the call for member recruitment!!



Rachel Leemkuil and Little Miss Ella

IOWA DEPARTMENT OF HEALTH AND LABORATORY ASSESSMENT

Iowa e-Health is a public and private collaboration with a mission of improving health care quality, safety and efficiency through the use of health information technology (health IT). This includes electronic health records (EHRs) and other electronic clinical software to collect and store patient health information, and a statewide health information exchange (HIE) to share health records across the boundaries of health care settings.

To best plan and implement the components of health IT, including Iowa's statewide HIE, it's important to understand providers' capabilities, preferences, and perceptions of health IT. To help us accomplish this, Iowa e-Health, in collaboration with the *University of Iowa Public Policy Center*, is conducting an **assessment of health IT issues facing laboratories** in Iowa.

The assessment will include questions regarding:

- Health IT capabilities (e.g., access to the internet or broadband networks)
- Preferences for types of high value clinical data exchange (e.g., electronic prescribing, continuity of care documents, lab results, medication lists)
- Perceived benefits and barriers to health IT use



In the next couple of weeks, each lab in Iowa (facility-based, independent, or other) will receive an email message from the *University of Iowa Public Policy Center* asking you to complete an online Iowa e-Health assessment. We ask that you help us by completing the online assessment, which will help ensure laboratories' voices are heard in health IT planning and implementation.

Visit www.idph.state.ia.us/ehealth for more information about Iowa e-Health and plans for the statewide HIE.

Questions? Contact Kory Schnoor at kschnoor@idph.state.ia.us or 515-281-6068.

AWARDS AND OTHER FUN STUFF.....

ASCLS-IA believes in recognizing those individuals for all the hard work and dedication given not just to our association but to our profession. Unfortunately the pictures taken to place in the NewsScope were inadvertently erased and ASCLS-IA apologizes to everyone for that mishap.

We appreciate you all with or without pictures!!

Hats off to the individuals below for their respective awards and honors!!

Keys to the Future

Shawn Froelich
Meighan Sharp
Tara Sorensen



Students against the seasoned ones in a friendly game of lab Jeopardy!

Past President Honors

Sheila Dunn

Member of the Year

Jan Frerichs

Student Member of the Year

Tara Sorensen

Mentor of the Year

Brenda Barnes



Phlebotomist of the Year

Valerie Buttjer

Outstanding Support Staff

Justin Esdohr

ASCLS-IA Scholarships

Katie Teske
MLS
Boskey Upadhay
MLT
Tracy Jiao
MLT



Don't even ask what they are doing to the David Seed Man!!

Outstanding MLS and MLT Students

Shawn Froelich ~ MLS
Jessica Scheers ~ MLT



Don't even ask what they are laughing at!



Sheila Dunn and Keri Erickson find something to smile about!



2009-2010 BOARD MEMBERS

PRESIDENT	Keri Erickson	president@ascls-ia.org
PRESIDENT-ELECT	K. Lindsey Davenport Landry	president-elect@ascls-ia.org
PAST-PRESIDENT	Kim Von Ahsen	past-president@ascls-ia.org
SECRETARY	Meighan Sharp	secretary@ascls-ia.org
TREASURER	Karen Campbell	treasurer@ascls-ia.org
3rd YR BOARD MEMBER	Judy Jackson	board-III@ascls-ia.org
2nd YR BOARD MEMBER	Doug Davis	board-II@ascls-ia.org
1st YR BOARD MEMBER	Theresa Ortner	board-I@ascls-ia.org
BOARD MEMBER, FYP	Shawn Froelich	board-FYP@ascls-ia.org
BOARD MEMBER, STUDENT FORUM	Callie Ostwinkle	board-studentforum@ascls-ia.org

COMMITTEE CHAIRS

BY-LAWS	Mick Williams	mwilliamswil@aol.com	
GOVERNMENT AFFAIRS	Theresa Ortner	gac-pac@ascls-ia.org	
HISTORIAN	Vonnie Hinrichsen	monkeyfarm@smunet.net	
LEADERSHIP DEVELOPMENT	Meighan Sharp	sharpme@ihs.org	
MEMBER RECRUITMENT	Tara Sorensen		
MEMBER SERVICES	Janice Frerichs	janice-frerichs@uiowa.edu	
NOMINATIONS/AWARDS	Kim Von Ahsen	awards@ascls-ia.org	
NewsSCOPE EDITORS	Vonnie Hinrichsen	monkeyfarm@smunet.net	
	Judy Jackson	jjackson@mvrbc.com	
	Kim Von Ahsen	kim.vonahsen@ascls-ia.org	
P.A.C.E. COORDINATOR	Kim Von Ahsen	kim.vonahsen@ascls-ia.org	
PROMOTION OF THE PROFESSION	Keri Erickson	president@ascls-ia.org	
	Career Recruitment	Judy Jackson	jjackson@mvrbc.com
	Public Relations		
WEBMASTER	Kim Von Ahsen	kim.vonahsen@ascls-ia.org	

*Have news to share about yourself, a co-worker, or your institution ~ let us write about it!!
Contact the NewsScope team via email! We LOVE news!*

EVER WONDER WHY.....

If a person with multiple personalities threatens to kill himself, is it considered a hostage situation?

How does the guy who drives the snowplow get to work in the morning?

Why do they put Braille dots on the keypad of a drive-up ATM?

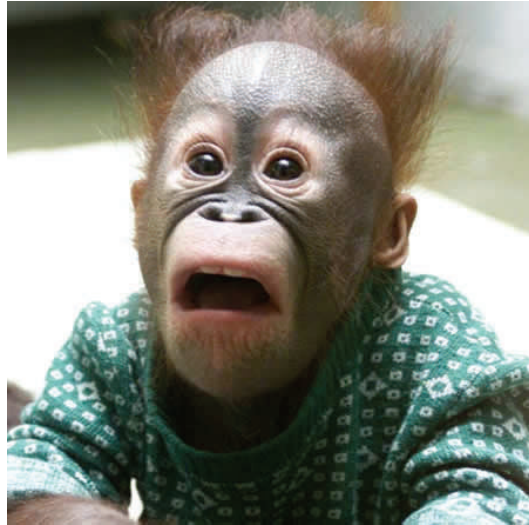
Why do doctor's leave the room when you change? They're going to see you naked anyway.

Why isn't there a mouse-flavored cat food?

Isn't it a bit unnerving that doctor's call what they do "practice"?

If a cow laughed, would milk come out of her nose?

Once you are in heaven, do you get stuck wearing the clothes you were buried in?



If a turtle doesn't have a shell, is he homeless or naked?

If a deaf person has to go to court, is it still called a hearing?

If a 911 operator has a heart attack, whom does she call?

Why are you IN a movie, but you are ON TV?

Why does a round pizza come in a square box?

ASCLS-IA NewsScope
113 Grandview Blvd
Spencer, IA 51301

ASCLS-IA 4 U